

Ruminant Portfolio

Animal Health Solutions



TechMix is Redefining Hydration

Hydration and nutritional support are essential for animal health, well-being, and performance; and this is particularly true during stressful events. Nearly all stress events lead to nutrient disruptions which cascade into digestive challenges. Therefore, while maintaining adequate hydration and supporting hydration health status is always important, it is especially the case during times of stress when livestock hydration and feed intake is compromised.

Our story began in 1983, when Dr. Pete Franz and Marty Nelson founded TechMix. The Nelson family owns several agriculture and animal nutrition businesses throughout the Midwest of the United States. Dr. Franz saw the need for hydration support in swine and cattle, that enhances feed intake and allows the animal to reach its genetic potential – which led him to the formulation of BlueLite®. From this technology platform, we developed product brands to meet the ongoing needs of animals such as the well-recognized YMCP® brand, which are specifically designed for quicker fresh cow recovery and to get cows back on feed faster. Over nearly 4 decades, the Tech-Mix portfolio of products has grown immensely, expanding to multiple species of livestock and various application forms. We listen to our customers, work with industry experts, and innovate new technologies to bring the highest quality products to the market, while staying true to who we are and what we believe.

With our portfolio of industry proven, and science-based products, we recognized the international need for hydration focused products, especially in Europe. We stepped up to this need and in 2012, TechMix Europe was created. TechMix Europe was created in 2012. TechMix has always been committed to the highest quality and regulatory compliance but moving into the European and international markets required an even greater commitment. To meet the high level required, TechMix Europe became GMP+ certified.



Currently, TechMix products are available in over 45 countries globally – with a strong presence in North America, across Europe and exported worldwide. In late 2020, TechMix acquired Immuno-Dynamics, a company which manufactures products that effectively aid in prevention of disease and fortify an animal during acute stress conditions. Much of Immuno-Dynamics product development has surrounded the health and immunity advantages of colostrum. The merger of both companies' robust research promises continued innovation and applications through every phase of life and production for commercial livestock. It is through those key developments that TechMix continues to provide solutions to our global customers. We are redefining hydration to keep your animals drinking, eating and producing.

Learn more about TechMix

Scan the QR-code to find out more about our animal health solutions.





An effervescent 2-bolus fresh cow supplement designed with live yeast, multiple calcium sources, and essential nutrients.

All fresh dairy cows face significant health challenges with suppressed immunity and need more than just calcium to help boost intakes and ensure a quick recovery. Built from the trusted and recognized YMCP® global brand, YMCP Vitall® is the total fresh cow product. Science-designed and demonstrated to help cows get back on feed faster, produce more milk, and respond to fresh cow challenges by boosting blood calcium levels. Our patent pending bolus utilizes other protected technologies to deliver essential nutrients including live yeast, calcium, magnesium, potassium and more, now in an efficient, easy-to-use application.



Key Functional Components: Live Yeast, Magnesium, Calcium, Potassium, Electrolytes, Niacin

Features & Benefits

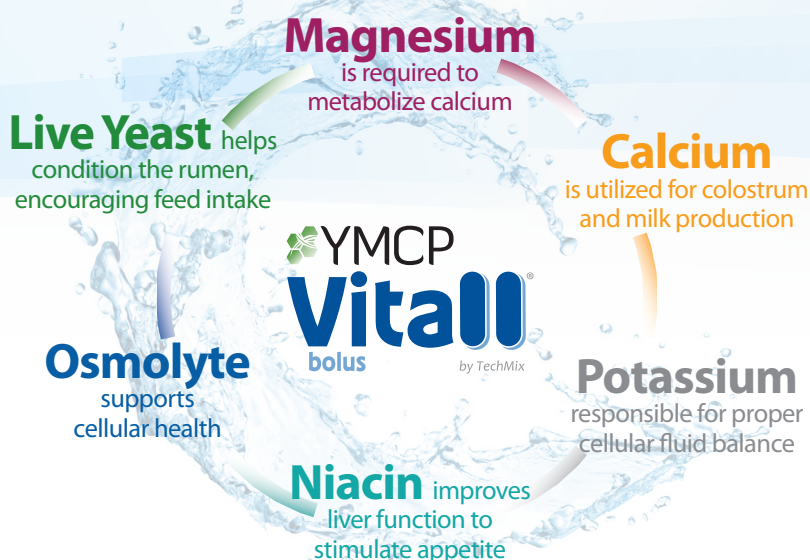
- Only pressed bolus on the market containing live yeast, helps rumen more rapidly adapt to the changing fresh cow diet, getting them on feed sooner.
- Provides rapidly absorbing calcium and other nutrients that meet fresh cow needs to get back on feed and recover.
- In vitro rumen studies demonstrate increased beneficial microbe activity.
- A unique effervescent bolus for optimal dispersion of critical nutrients for rapid availability
- University research studies show cows get on feed faster and increased daily milk production.

Usage

Give 1 dose (2 boluses) immediately after calving. A second dose can be given if needed 12-24h after calving.

Because fresh cow **recovery** requires
more than just calcium.

A lot more!





Complete fresh cow supplement featuring yeast, magnesium, calcium, potassium, and niacin for the transition into lactation.

When cows freshen, a large reservoir of essential nutrients is lost that is needed to help cows transition into lactation. Offer support by giving Fresh Cow YMCP to supplement levels of yeast, magnesium, calcium, potassium, and niacin. Fresh Cow YMCP trials have shown it provides necessary support to fresh cows during the transition period.



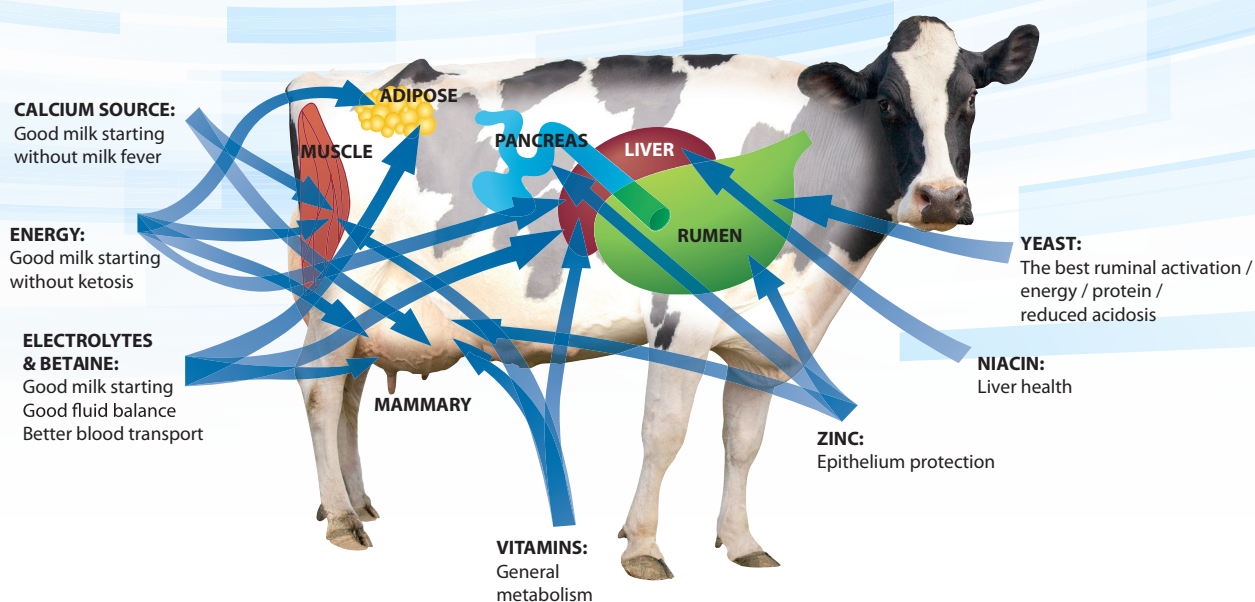
Key Functional Components: Live Yeast, Magnesium, Calcium, Potassium, Electrolytes, Niacin

Features & Benefits

- Contains a large dose of live yeast to help repopulate the gut with beneficial bacteria and jumpstart the rumen.
- Contains 60 grams of calcium derived from different sources.
- Magnesium is added to help the body to better absorb calcium.
- Added potassium which is essential for energy metabolism and helps with feed utilization.
- Niacin is added for ketosis prevention.

Usage

Mix 1 sachet of 500 g Fresh Cow YMCP to a minimum of 20 liters of warm water. Provide the solution immediately after calving.





A supplemental source of probiotics for dairy in capsule form.

When cows are off feed, helping them to return to normal intake levels and profitability quickly is the top priority. RYCaps® helps to restore beneficial bacteria in the rumen and encourage dry matter intake any time that normal digestive health has been interrupted.

Key Functional Components: Dried Live Yeast (*Saccharomyces cerevisiae*), 6 grams of Niacin and Fermentation Extracts

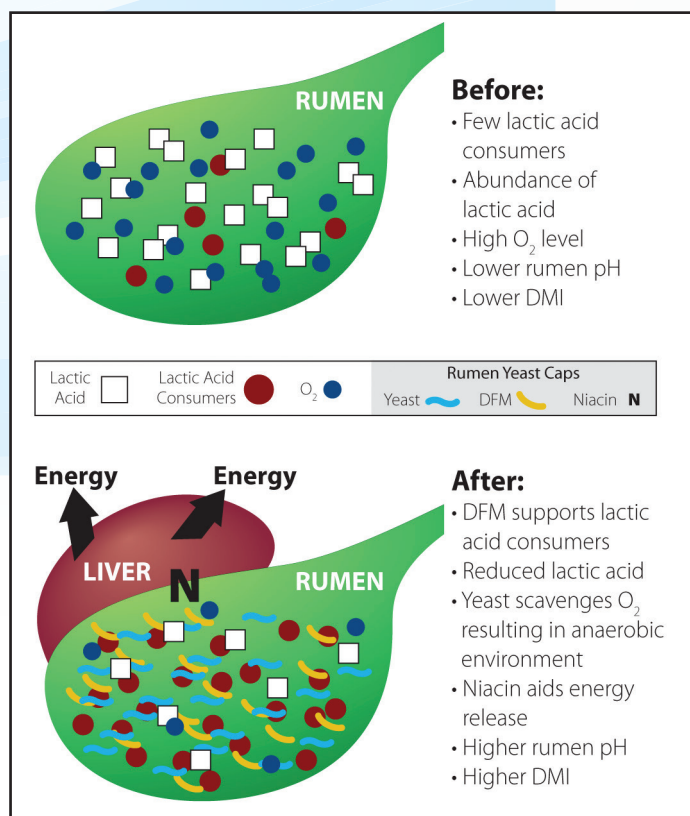


Features & Benefits

- Contains live yeast to improve rumen microflora, stimulate dry matter intake and to promote a healthy rumen environment.
- Includes 6 grams of niacin to help with ketosis prevention.
- Added fermentation extracts to increase cellulolytic bacteria and metabolites and enzymatic activity supporting increased rumen efficiency and enhancing beneficial bacteria.
- Added vitamin B to support animal health during periods of stress.

Usage

Administer one capsule daily for 2-3 consecutive days following calving or freshening or whenever feed or dry matter intake drops below normal.



BOVINE
BLUELITE[®]
by TechMix

Rehydrate. Recover. Perform.

Hydration is the key component to herd health and performance. An easy-to-administer electrolyte, Bovine BlueLite[®] is very palatable, buffered, and provides added energy sources and vitamins necessary to help recover from dehydration. Use Bovine BlueLite to help cows rehydrate after freshening and in times of heat and other stress.

Key Functional Components: Electrolytes, Acidification, Multiple Energy Sources, Vitamins

Features & Benefits

- A high potassium electrolyte for quick replacement.
- Highly palatable and buffered electrolyte formulated for dehydration.
- Contains multiple energy sources.
- Convenient packaging for ease of administration for individual or whole herd treatments.
- Highly soluble powder to add to water, mix in TMR or top dress on feed.

Usage

- Feeding rate: 40 grams dairy for adult animals / 20 grams daily for young animals. (Dissolve 40 grams per 25 liters of water)
- First 2 weeks after calving
- During mild and severe heat stress



Lower body temperature

- › Improved dissipation of excess heat

Electrolyte & osmolyte technology

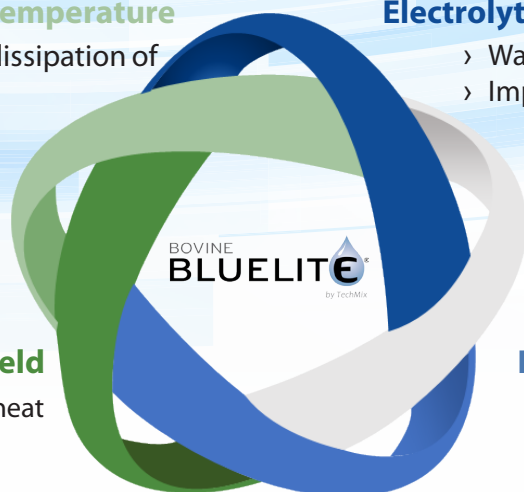
- › Water transport
- › Improved gut cell integrity

Maintained milk yield

- › More milk during heat stress/transition

Improved reproduction

- › Increased pregnancy rates
- › Fewer days open





Complementary feed for hydration support in ruminating cattle.

Hydration is the key component to herd health and performance. When a cow is stressed or sick and their production is affected, she needs highly concentrated nutrients for immediate benefit. BlueLite Forte® addresses these needs and targets hydration and immune function in a single dose, palatable drink.

Key Functional Components: Electrolytes, Osmolytes, Multiple Energy Sources, Antioxidants and Vitamins

Features & Benefits

- Highly palatable drink
- Concentrated single application
- Formulated electrolyte ruminant blend for immune support and hydration
- Easy-to-use, readily soluble powder in a single-dose sachet
- Source of fluid-balancing osmolytes

Usage

- During and following stress events (post-antibiotic use, post-surgery, post-vaccination)
- Anytime hydration support is required
- In the hospital pen



Single Dose

- Ready to use
- 500g sachet

Highly Palatable

- Soluble powder
- 1 sachet in 20 liters of water

Sick and Stressed Cows



An easy-to-use capsule containing a source of live (viable) naturally occurring probiotics and antimicrobials for digestive health support.

Protect the future of your herd with Calf Renova®. When calves are susceptible to scouring or at first signs of diarrhea, helping them recover their hydration status and appetite for continued growth is the top priority. Calf Renova helps to reduce harmful bacteria and restore the gut microbiome. Quickly address enteric health issues with Calf Renova and help support recovery by enhancing intestinal microflora and encouraging dry matter intake any time that normal digestive health has been interrupted.



Key Functional Components: Essential oils, MOS (mannan oligosaccharides) and probiotics

Features & Benefits

- Helps to clean gut of microbes which cause scouring and diarrhea.
- Powerful antioxidant for immune enhancement
- Creates healthy digestive environment and limits potential impact of pathogens.
- MOS helps with pathogen and toxin binding.
- A non-antibiotic alternative for enteric/scouring health issues.

Usage

During periods of, or after digestive problems give 1 capsule per calf at 3 days of age or later, repeat daily if required. Do not exceed 3 consecutive days of providing capsules.

Formulated to Perform:

Three key contributors to calf recovery

Essential Oils

Provides a powerful antimicrobial activity that helps to clean the gut

1

Direct-Fed Microbials

Inhibits pathogen growth and repopulates the gut with beneficial bacteria

2

3

MOS

Binds pathogens and provides a healthy digestive environment and enhanced immunity

BLUELITE®
Replenish^M
 by TechMix For Calves

A liquid oral rehydration solution for calves

Calf diarrhea or scours is a major health problem in calves less than 2 months of age. When treating calves with diarrhea, the use of oral rehydration products are an important tool. Five important goals for treating diarrhea are: correcting dehydration, correcting acidosis, correcting electrolyte abnormalities (Na, K, Cl), reversing negative energy balance and preventing the growth of pathogenic bacteria. BlueLite® Replenish^M is a palatable liquid buffered calf electrolyte formulated for the scouring calf. Providing oral rehydration with a preferred alkalizing agent - help replenish lost nutrients during scours with BlueLite Replenish^M - for calves!



Key Functional Components: Glucose, Electrolytes, Sodium Acetate, Glycine & Betaine

Features & Benefits

- A palatable liquid buffered calf electrolyte.
- Contains 3 recommended alkalizing agents to facilitate sodium absorption, produce and provide energy, to maintain a low abomasal pH to decrease incidence of infection and clinical disease. Includes Sodium Acetate which is the preferred alkalizing agent in this type of product.
- Meets recommendations of oral rehydration product (Dr. Geof Smith, North Carolina State University).
- Ease of administration – no stirring required.

Usage

- Provide 100 ml of BlueLite Replenish^M into 2 liters of warm water, consumed on a daily basis.
- Or provide 50 ml of BlueLite Replenish^M with each milk feeding (morning, evening)

	Recommendations <i>Smith G., Vet Clin Food Anim 25 (2009) 55-72</i>	BlueLite® Replenish^M
Energy		Glucose Syrup + Dextrose
Sodium (mmol/l)	90-130	103
Potassium (mmol/l)	10-30	30
Chloride (mmol/l)	40-80	49
Strong Ion Difference (Na⁺ +K⁺-Cl⁻) <i>Buffering ability (the higher the better)</i>	Minimum 60	84
Amino Acid	Glycine	Glycine
Osmolarity	400-600	405
Buffering Agents (mmol/l)	50-80	Sodium acetate Sodium propionate Sodium citrate 81 mmol/l
Dose Rate		50 ml/liter

* Daily suggested amount of an oral rehydration solution depends on severity of scours.

BLUELITE C **HydraTabs®** by TechMix

An easy to use, effervescent oral hydration support supplement for young calves.

In the first few weeks of life, calves encounter many environmental and physical challenges that can result in scouring events, whether mild, moderate, or serious. It is essential to rehydrate and restore electrolyte balance in the dehydrated, scouring calf. BlueLite C Hydra Tabs® is an electrolyte with multiple energy sources that can be given to help rehydrate calves and to promote a healthy digestive environment. In an innovative, effervescent tablet, BlueLite C Hydra Tabs are convenient to use and require no mixing. With time tested technology, in an easy-to-use tablet, BlueLite C Hydra Tabs provide readily digestible energy and electrolytes any time hydration support is needed, in a fast-acting form.



Key Functional Components: Electrolytes and Energy

Features & Benefits

- No measuring required.
- No stirring required.
- Highly palatable
- Compatible with water, milk or milk replacer

Usage

Dissolve 1 tablet in 1 liter of warm water. Provide 2-3 times daily until recovery. Mixed solution should be used within 24 hours.



Provide 1 BlueLite C Hydra Tabs in 1 liter of water (preferably warm water), consumed on a daily basis



No mixing required!



Highly palatable



Contains a source of live, naturally occurring microorganisms for use in calves.

For a calf, the transition to feed can create digestive disturbances and disrupt water and feed intake. Calf PreRD is specifically designed to aid in the development of the rumen to establish dry feed intake at an earlier age to help improve weaning weight and reduce digestive health issues. Packed with DFMs (direct-fed microbials), Calf PreRD uses live bacteria to help maintain a more desirable digestive environment, in turn helping to stave off pathogens and aid in nutrient utilization. Calf PreRD is an effective way to help calves to ease the transition to dry feed with less digestive disruption.



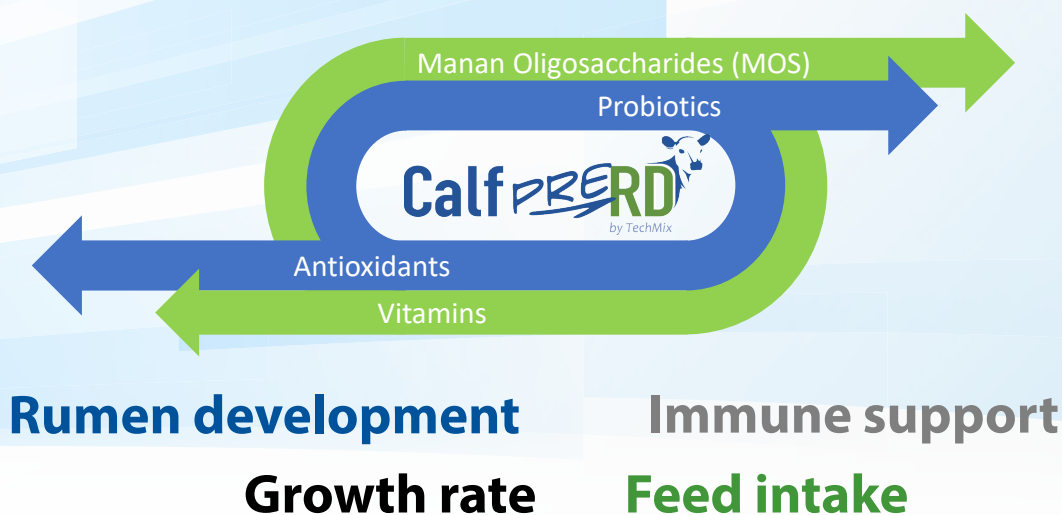
Key Functional Components: Direct Fed Microbials

Features & Benefits

- Formulated with fermentation products, including live bacteria, to enhance weight gain through better gastrointestinal health
- Includes digestive enzymes and antioxidants help encourage a healthy immune system
- Compatible with water, milk or milk replacer

Usage

2 gram per feeding (4 gram per calf/day) mixed with milk or milk replacer.



CALF PERK

by TechMix

A supplement to help support calves

Birth is a stressful time for calves – difficult births and calving into cold environments add to that stress. It is critical to get these calves on their feet and eating. Calf Perk® is an easy to use, immediate energy stimulant for newborn calves that naturally increases body temperature and respiration rates to perk them up. Formulated with the help of industry experts, Calf Perk's unique, patented formulation ensures rapid absorption, maximizing its effect.



Key Functional Components: Naturally occurring caffeine, Antioxidants, Anti-inflammatories

Features & Benefits

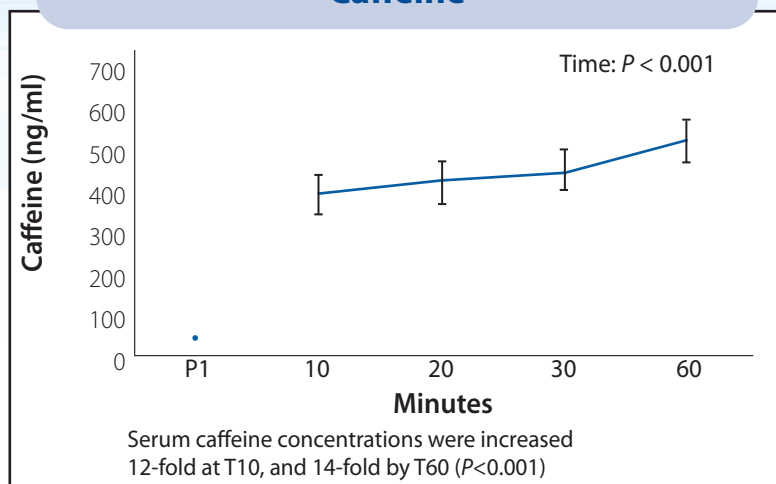
- Concentrated, easy to use
- Quick absorbing, fast acting
- Naturally increases body temperatures and respiration rates in newborn calves
- Enhances calf vigor and suckle reflex
- Based on recommendations from human medicine for infant support
- Unique energy source
- Research demonstrates no negative effect on immunoglobulin absorption

Usage

- Newborn calves that need a boost
- During cold temperatures or after a difficult birth
- Depressed, lethargic received calves

- caffeine enters the blood stream very quickly via the oral mucosa
- continues to increase in concentration even sixty minutes following administration

Caffeine



Accessories

Calf Renova®
Plastic applicator



RYCaps®
Plastic applicator



RYCaps®
Stainless steel applicator



YMCP Vitall®
Stainless steel V-grip applicator



YMCP Vitall®
Stainless steel plunger applicator



Notes

Notes

At TechMix we realize the importance of hydration.

What we believe **We believe** hydration is the single most important component to the well-being and performance of your animals.

We believe that during stress events, animals don't drink enough water – leading to dehydration – and don't consume enough critical nutrients.

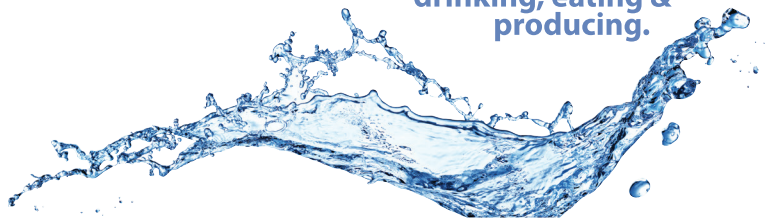
We believe hydration innovation is a critical component to your success.

Who we are **We are TechMix.** Hydration is in our DNA.

We are TechMix. We invented BlueLite – and from this technology platform, we develop products to meet the ongoing needs of producers - both today and in the future. BlueLite is the first hydration product to address the specific needs of individual species including swine, beef, dairy and companion animals.

We are TechMix.

Redefining hydration
to keep animals
drinking, eating & producing.



TechMix Europe S.L.
αESP43201472
Avenida del Mar 90,
43860 Ametlla de Mar
Tarragona - Spain
www.techmixglobal.com

01302023

TechMix

Redefining hydration
to keep animals
drinking, eating & producing.



@techmixglobal